

The Brightwell's Accessibility Statement

Centre address: The Brightwell, Bradbury House, Wheatfield Drive, Bradley Stoke, Bristol BS32 9DB

What3Words: ///power.safe.apron

Bradbury House is a purpose-built facility and is fully accessible. The entire site is level and accessible, meeting the needs of our service users, with full access for those using walking aids and manual or electric wheelchairs.

The Centre does not have a hearing loop.

Brightwell Carpark



The Brightwell is accessed through the Wheatfield Drive housing estate. There is signage from Bradley Stoke Way and Wheatfield Drive. The car park has 14 clearly identified disabled parking spaces plus ample parking for non-disabled staff, volunteers and visitors. On the rare occasion that additional parking space is required, there is on-street parking nearby. Fire Exits are clearly marked, and a designated Fire Warden will always be on duty.

Centre Entrance

The entrance is through two sets of automatically opening doors with a minimum width of 115cm.

After passing through the vestibule, where a defibrillator is located, there are wheelchairs and rollators for evacuation or emergency purposes for visitors' use.



Reception

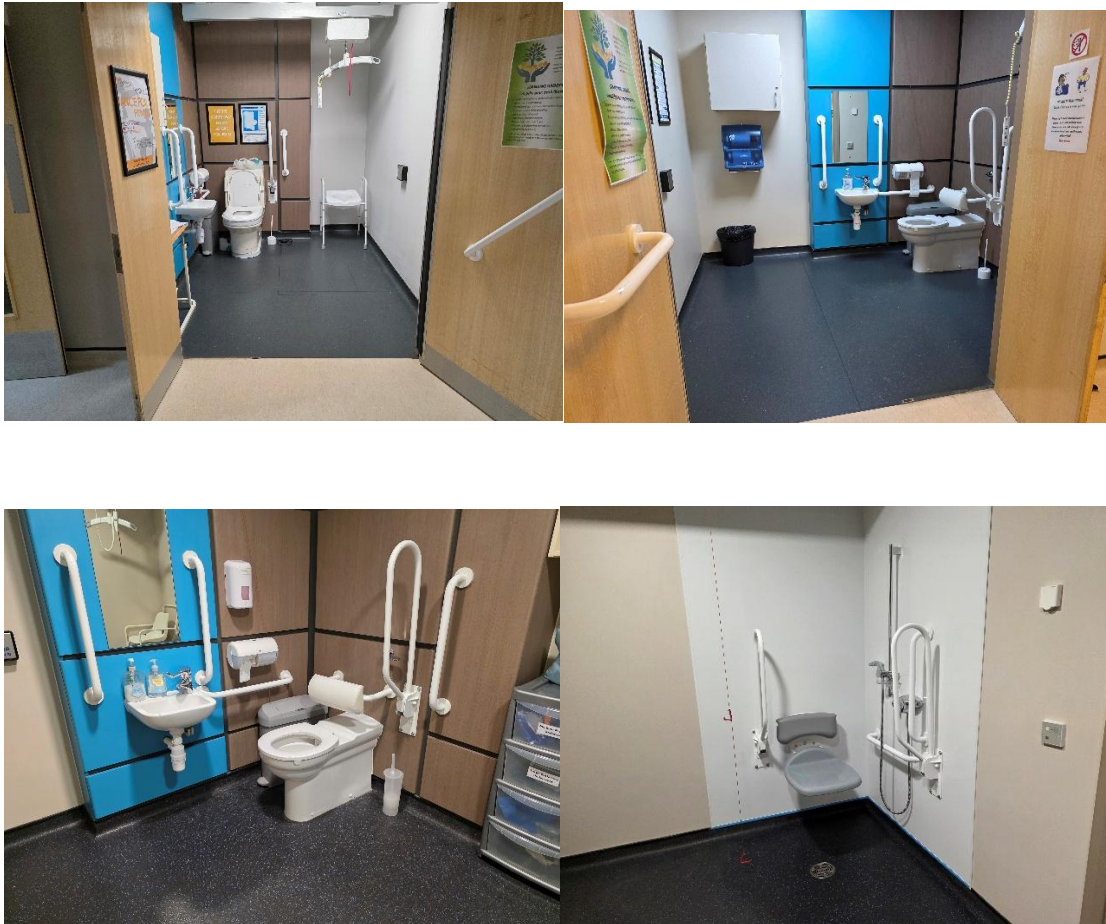
There is a fully accessible staffed reception area leading to the Brightwell Café and Lounge. There is a small meeting room behind the reception, and a shop area opposite.



Toilet Facilities

Throughout the building, there are three large unisex accessible toilets, all fully adapted with hoists and safety handles, and grab rails. The toilet area in the physio department also has an accessible shower area with a hoist. There are two further unisex toilets for staff and visitors.

A baby changing unit is available in one of the disabled toilets, by the entrance to the Physiotherapy Department. The door opening for each accessible toilet is 95cm with the option to open to 150cm.



Oxygen Department

Turning left at Reception will take you to the Oxygen Department, which houses the main Hyperbaric Oxygen Chamber, a kitchen/sanitising area for staff and operators and three workstations. This area is fully accessible; the double doors to the Oxygen Department can be opened to 180cm.

The width of the ramp up to the chamber and chamber door access is a maximum of 60cm. Access into the Chamber is limited to 16" seat wheelchairs, however equipment is available to transfer into one of our 16" wheelchairs if needed. Seats inside the chamber can be moved or rearranged to accommodate wheelchair users. Operators are always on hand to assist. Evacuation chairs are available in case of an emergency, as well as an emergency stretcher mat.

The Oxygen Department is air-conditioned, and handheld fans are provided for use inside the chamber if needed.



There are three high-backed chairs with arms for those having isobaric oxygen on the outside of the Chamber. The chairs can be removed for wheelchair users to access oxygen outside of the Chamber.



The fire escape door from the Oxygen Department is clearly marked and is 95cm wide. Heading back to the reception area, there are three larger offices, one used for the Brightwell admin, finance and fundraising teams. The other two offices are used by other charities. These offices are fully accessible to staff members but are not open to the public. As well as the main entrance doors, there is an additional fire escape door at the rear of this area with a maximum width of 140cm.

Therapy Rooms 1, 2 and 3

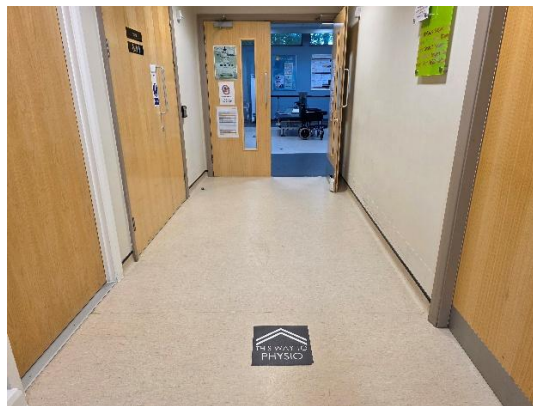
To the right of the Café/Lounge area, a wide corridor leads to the Physiotherapy Department/Gym area passing two Therapy rooms. One of these is used by an ultrasound service and the other is used for additional therapies and has a ceiling host.

Once inside the Gym, there is a further Therapy room for consultations or specialist clinics, which also has a ceiling hoist.

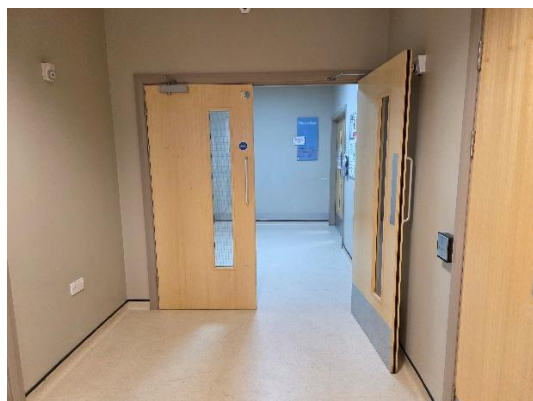
The lighting in each Therapy room is dimmable or can be turned off. The width of each therapy room door is 90cm with the option to open to 140cm. Each Therapy room has optional air conditioning.

Physiotherapy Department/Gym

The Physiotherapy Department and Gym can be accessed via double doors from the main corridor, past the Café, which opens to 160cm wide.



The Physiotherapy Department can also be accessed from an entrance past the Oxygen Department. This is via two sets of manual double doors, each with a maximum opening width of 160cm. The recommended entrance is via the corridor next to the Café. The directions to the physio department are highlighted by floor signage.



The Physiotherapy Department is a significant space that can be divided via a folding wall. This area is well equipped and has ceiling hoists throughout. There is the option of air conditioning, and the lighting is dimmable or can be turned off.

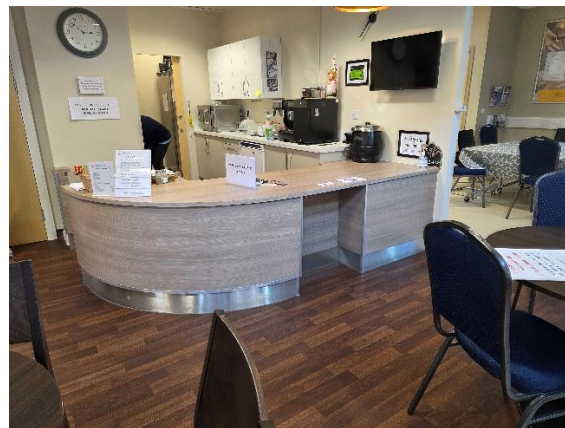
As well as ceiling hoists, there is additional mobile equipment for transfers or additional support.

There is an office for the staff, plus an equipment storage area; these two areas are not open to the public. There is a clearly marked fire escape door in the Gym with a width of 160cm.

The Brightwell Café

The Brightwell Café is accessible to all for ordering and paying for food and beverages.

There is wheelchair access to the low-level food counter. Staff and Volunteers will take any food and drink to the customer's chosen seat or wheelchair space if they are unable to carry their purchases. Large print menus are available.



Lounge and Therapy Garden

There is ample seating and space for wheelchairs in the lounge area. The Therapy Garden has been developed to include a patio terrace and a large gazebo. There is an accessible path across the grassed area, and this outdoor space can be accessed via the Lounge through automatic opening doors that are 90cm wide, or via the car park.



For further information

If you have any questions before your visit, please call us on 01454 201686 or email reception at: hello@thebrightwell.org.uk

We look forward to welcoming you to The Brightwell very soon!